





# SARS-CoV-2 Antigen Rapid Test (Nasal Swab) Instruction Guide

Before testing, scan the QR code to watch the how to use video.

## BEFORE STARTING

Wash your hands with soap and water for at least 20 seconds before and after test. If soap and water are not available, use hand sanitizer with at least 60% alcohol. Make sure they are dry before starting.



## PREPARE FOR THE TEST

Check the expiration date on the box. Do not use if the kit if it has been damaged or has expired

Ensure kit is at room temperature for at least 30 minutes prior to use.

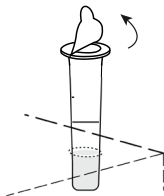
Open the box carefully as it will be used in a later step .

Do not open individual components until instructed.

**Note: A timing device (clock, timer, phone etc.) is required, but not provided.**

## 1. SPECIMEN COLLECTION

Remove the cover of the tube with Extraction buffer and place the tube in the tube holder.



### Nasal swab specimen Collection

1. Remove the sterile swab from the pouch.
2. Insert the swab into your nostril until you feel slight resistance (Approx. 2cm up your nose). Slowly twist the swab, rubbing it along the insides of your nostril for 5-10 times against the nasal wall.

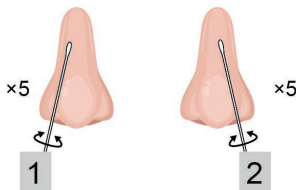
#### Note:

This may feel uncomfortable. Do not insert the swab any deeper if you feel strong resistance or pain.

When the nasal mucosa is damaged or bleeding, nasal swab collection is not recommended.

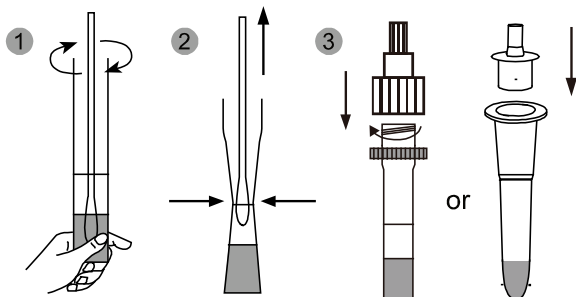
If you are swabbing others, please wear a face mask. With children, you may not need to insert the swab as far into the nostril. For very young children, you may need another person to steady the child's head while swabbing.

3. Gently remove the swab.
4. Using the same swab, repeat step 2 in your other nostril.
5. Withdraw the swab.



## SPECIMEN PREPARATION

1. Place the swab into the Extraction tube, ensure it is touching the bottom and stir the swab to mix well. Press the swab head against to the tube and rotate the swab for **10-15 seconds**.
2. Remove the swab while squeezing the swab head against the inside of the Extraction tube. Place the swab in a biosafety bag.
3. Close the cap or fit the tube tip onto the tube.



## 2. TESTING

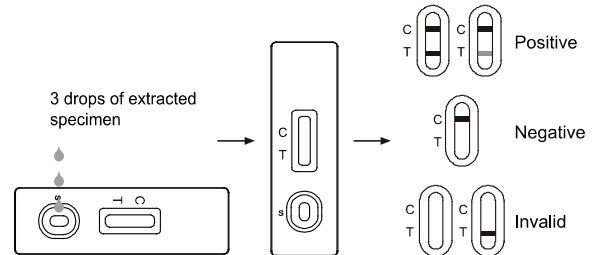
1. Remove the test cassette from the sealed foil pouch and use it within one hour. Best results will be obtained if the test is performed immediately after opening the foil pouch.  
**Place the test cassette on a flat and level surface.**

2. Open the small cap and Invert the specimen extraction tube and add **3 drops of extracted specimen** to the **sample well(S)** of the test cassette and start the timer.

3. **Read the result at 15 minutes.**



Do not read the result after 20 minutes.



## 3. READING THE RESULTS

Please share your test result with your healthcare provider and carefully follow your local COVID guidelines/requirements.

**POSITIVE:** \* Two distinct colored lines appear.



**One colored line should be in the control region (C) and another colored line should be in the Test region (T).**

**\*NOTE:** The intensity of the color in the test line region (T) will vary based on the amount of SARS-CoV-2 antigen present in the sample. So **any faint colored lines in the test region (T) should be considered positive.**

A positive results means it is very likely you have COVID-19, but the positive samples should be confirmed to reflect this. Immediately go into self-isolation in accordance with the local guidelines and immediately **contact your State or Territory Coronavirus testing services to get a laboratory PCR test** and you will be explained the next steps

**NEGATIVE:** One colored line appears in the control region (C).



**No colored line appears in the test line region (T).**

**You are unlikely to have COVID-19. However, it is possible for this test to give a negative result that is incorrect (a false negative) in some people with COVID-19. This means you could possibly still have COVID-19 even though the test is negative.**

If you experience symptoms such as headaches, migraines, fever, loss of sense of smell or taste, contact the nearest Covid test centre according to the rules of your local authority. In addition, you can repeat the test with a new test kit. In case of suspicion, repeat the test after 1-2 days, as the coronavirus cannot be precisely detected in all phases of an infection.

**Even with a negative test result, distance and hygiene rules must be observed, migration/traveling, attending events and etc. should follow your local COVID guidelines/requirements.**

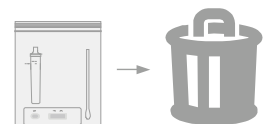
**INVALID:** Control line fails to appear.



**Insufficient specimen volume or incorrect procedural techniques are the most likely reasons for control line failure.** Review the procedure and repeat the test with a new test or contact with your doctor or a COVID-19 test center.

## 4. DISPOSE THE TEST KIT

After the test is complete, place all the components in a biosafety bag and tightly sealed, then dispose in household waste or rubbish bin.



Dispose according to local regulations